

Camp Grayling Chargeable Quarters/Lodging

Camp Grayling offers numerous on-camp chargeable quarter options throughout the year. All lodging includes linens, Wi-Fi, cable tv, microwave, coffee pot and refrigerator. Amenities include daily housekeeping (except cottages), coffee and condiment pack, and personal care items.

No pets allowed.

No smoking in buildings.

No fires in Cantonment area.

RESERVATIONS:

RESERVATIONS FOR TIERS can be made up to a year in advance for official use and up to 90 days for non-official use.

RESERVATIONS FOR COTTAGES are week long (Saturday – Saturday or Sunday – Sunday). Reservations for Cottages can be made up to 180 days in advance for official use and up to 90 days for non-official use.

Cottage stays of 2 nights or more can be made only when within 30 days of desired arrival date.

Per NGR 5-3-1, Official users are DoD personnel in a temporary duty status that are:

- a. On an official travel order.
- b. Performing inactive duty training (IDT) and arrive before or remain after for the convenience of the Government or reside outside the local commuting area.
- c. Listed on a unit annual training order.
- d. On written or verbal orders by their Unit Commander to remain at the temporary duty station.
- e. Supporting a mission/emergency requirement as determined by the Commander or designee.

PAYMENT POLICY:

For Tiers 1 - 3, payment is due the business day prior to departure.

For Cottages, payment is due at time of check in.

No refunds.

No cash or checks.

We accept: Visa, MasterCard, Discover and AMEX

CANCELLATION POLICY:

Tier 1 – 3 reservations cancelled within 24 hours of scheduled arrival date and no shows will be charged a one night fee.

All Cottage cancellations are a \$100 fee.

CHECK IN/CHECK OUT:

Check in is between 1500 and 1630.

Tier 1-3 Check out is 1100.

Cottage Check out is 1000.

Keys must be returned to the office or the drop box at the lower entrance of Building 4.

AFTER HOURS ARRIVAL:

For after hours or weekend arrivals, arrangements will be made utilizing key boxes in the mailroom/ATM room located in the lower level of Building 4.

OCCUPANCY POLICY:

Tier 1 and 2 rooms are designed/have amenities for single occupancy. Additional guests incur a charge of \$9.00 per night per guest. Children over 8 are considered additional guests. Lodging Office must be notified of all overnight guests.

DAMAGED/MISSING ITEMS/UNSATISFACTORY CONDITION:

Units with damaged/missing items or left in unsatisfactory condition may incur additional charges and lodging privileges may be lost.

PERSONAL PROPERTY:

Camp Grayling Lodging Program is not responsible for lost/missing personal items. If any items are found left behind, owner will be notified and items will be kept for 6 months.

RELOCATION/CANCELLATION:

All Tier and Cottage reservations may be cancelled/relocated based on the needs of the MING at any time by the TAG, ATAG, Garrison CDR or Deputy Garrison CDR.

Tier 1 Quarters

Private queen rooms and baths in a home style setting with full kitchen, living room, dining room and furnished deck with grill.

Single Occupancy Rates:

Official: \$68/night

Non-Official: \$87/night

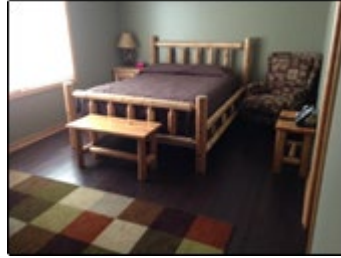
Additional Guest: \$9/night

413* - Distinguished Visitor Quarters - 5 rooms (also includes washer & dryer)

*For use by Senior Officers and Senior Enlisted

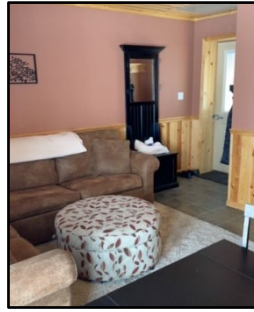


401 – 2 rooms (also includes washer & dryer)



49 North – 1 room

49 South – 1 room



Tier 2 Quarters

Private queen bedroom and bathroom with shared laundry facility.

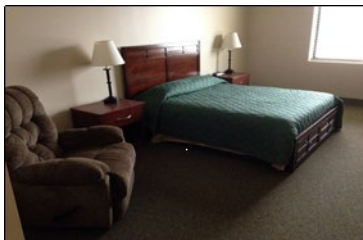
Single Occupancy Rates:

Official: \$50/night

Non-Official: \$69/night

Additional Guest: \$9/night

Building 120 – 10 rooms



Building 532 – 10 rooms (also has shared common area)



Tier 3 Quarters

Private twin rooms with shared bathroom and common area.

Single Occupancy Rates (only):

Official: \$35/night

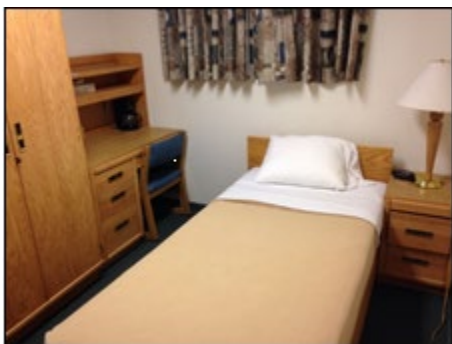
Non-Official: \$44/night

50 – 2 rooms

113 – 2 rooms

214 – 2 rooms

216 – 2 rooms



Cottages

Two story, 3 bedroom, two bathroom fully furnished homes on Lake Margrethe. Sleeps 8 people. Upper level: Room with 1 king bed, Room with 2 queen beds, one bathroom with tub. Main level: Room with 1 queen bed, one bathroom with walk-in shower. Furnished deck with grill.

Rates:

Official: \$130/night

Non-Official: \$161/night

Cottage 77, 78, 79, 80.



OFFICE INFORMATION:

Camp Grayling Lodging Office is located in the lower level of Building 4/Headquarters Building.

Office Hours: Monday – Friday, 0800-1630

989-344-6213

cgctqs@gmail.com